

LASER VIBROMETER CODE 0030-LM15



sensitivity setting

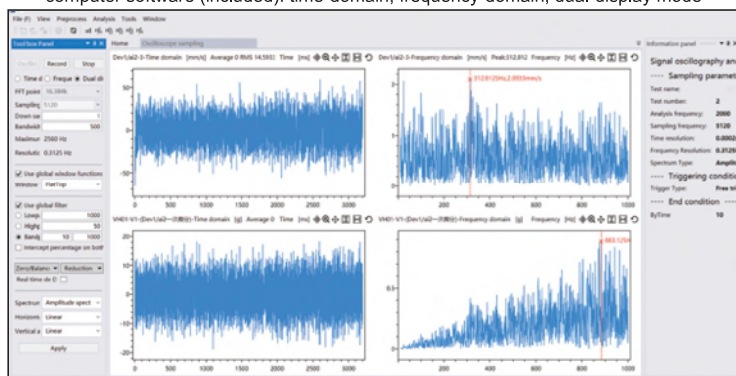
reflective signal strength indicate

- Non-contact measurement, no additional mass influence
- All-in-one design, integrated optical and electrical systems
- Manual focusing
- Computer software is included



tripod (included)

computer software (included): time-domain, frequency-domain, dual-display mode



SPECIFICATION

| | | |
|--------------------------|---------------------------|--|
| Laser | | output<4mW, wavelength 632.8nm, class 3A laser product |
| Working distance | | 0.35mm~10m (depending on surface) |
| Speed decoder | bandwidth | DC~20kHz |
| | range | ±50mm/s, ±500mm/s, ±5000mm/s (adjustable) |
| | maximum speed resolution* | 0.1µm/s/√Hz |
| Maximum linearity error | | ±1% |
| Output voltage range | | ±10V |
| Output | digital signal | ethernet port |
| | analogue signal | BNC port |
| Low-pass filter | | 500Hz, 2kHz, 20kHz |
| Gear control and display | | 7-inch colour touchscreen with interactive menu-guided setting |
| Power supply | | power adapter |
| Operation temperature | | 5°C~45°C |
| Storage temperature | | -10°C~65°C |
| Dimension | | 382×160×94mm |
| Weight | | 5.2kg |

*Maximum speed resolution is defined as the signal amplitude (RMS) measured at 10Hz with a signal-to-noise ratio of 0dB when a reflective film is applied at a distance of 2 meters

STANDARD DELIVERY

| | |
|-------------------------------------|------|
| Main unit (including speed decoder) | 1 pc |
| Tripod | 1 pc |
| Power adapter | 1 pc |
| Software | 1 pc |